

WORKS – PORTRAIT

Working on portraits with Coiffard's «sand and dripping» technique, was the next step of advancement after concluding her landscape series.

Who could act as a better model for such a hazardous experiment than herself?

Nevertheless, the result was rewarding enough to dare to progress to the next stage: Painting other persons.

The Nefarious series was the prerequisite step required before she felt confident enough to paint others.

(For print resolution, please contact us)



Cécile Coiffard

SELF-PORTRAIT

Left: «Berlin» 80 x 60 cm
Right: «Duinbergen» 100 x 100 cm

Coiffard's self-portraits are not only belonging to a long tradition in fine art but are also the completion of an introspective journey in time.



SELF-PORTRAIT

Left: «Rue de Turique» 120 x 80 cm
Middle: «La Bidassoa» 100 x 50 cm
Right: «Lycée Français de Belgique» 120 x 80 cm



THE NEFARIOUS

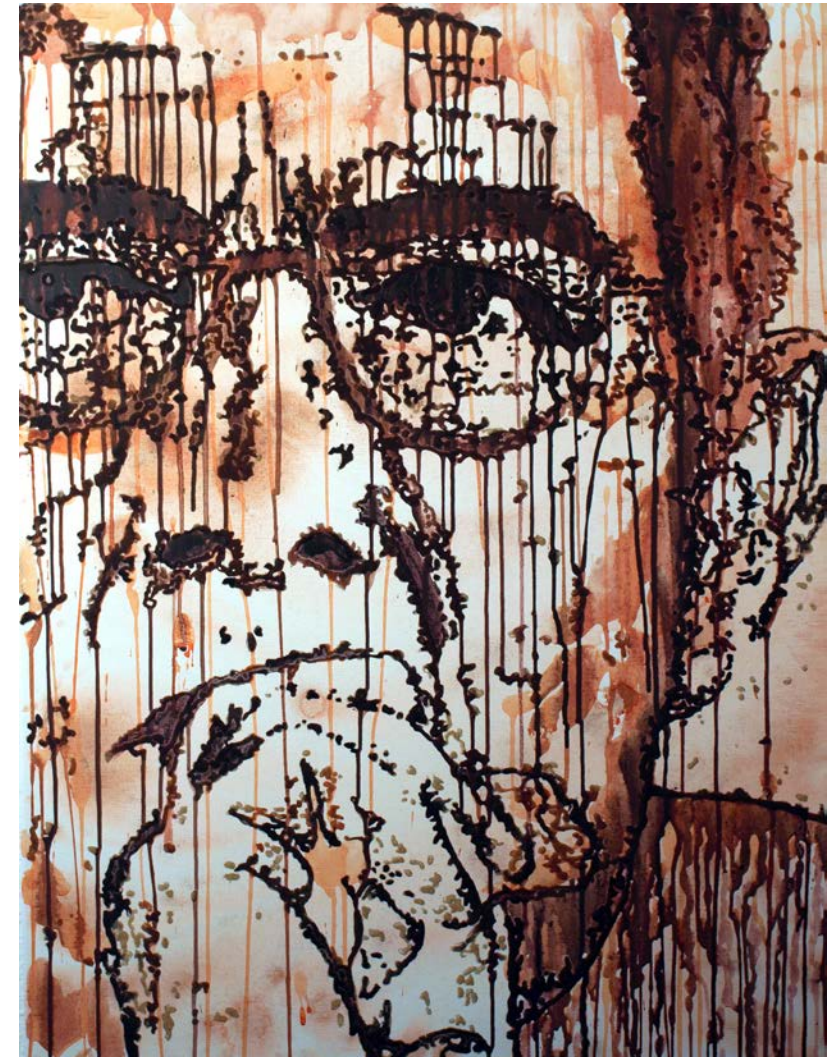
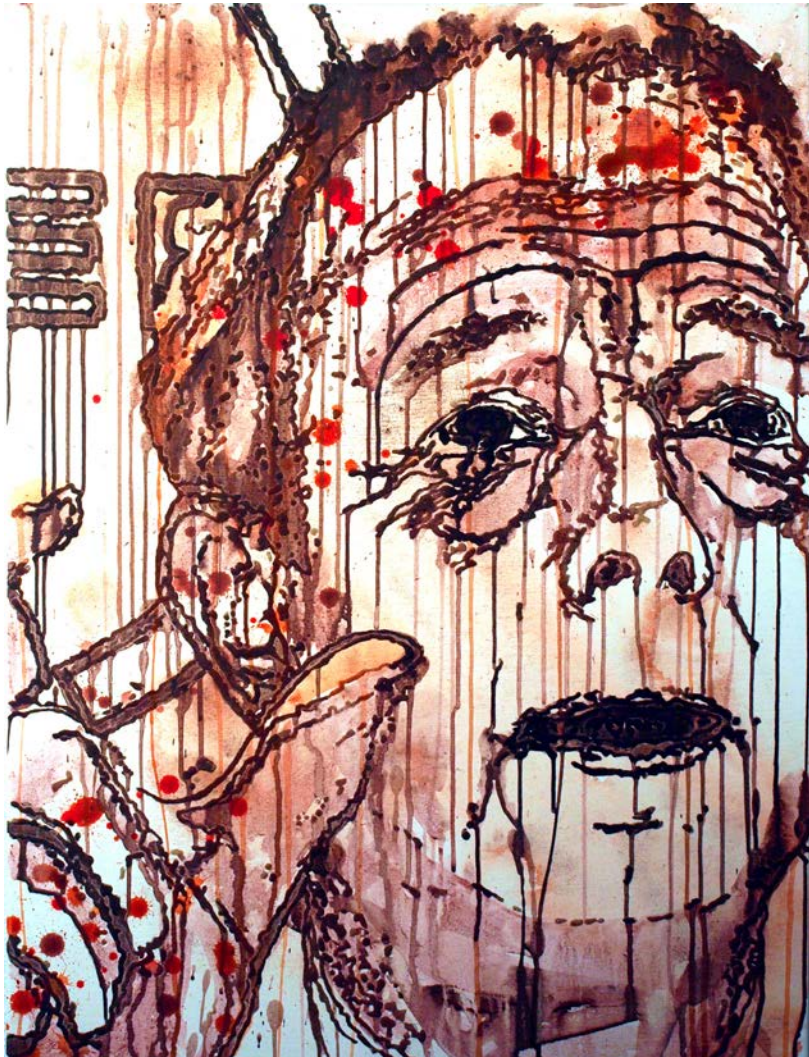
The Nefarious
A collection of 23 portraits
80 x 60 cm

The Nefarious, a randomly chosen collection of people at power whose actions are having fatal consequences for humankind. In our daily lives, we are not always aware of their impact on us. By creating this series of faces, Coiffard tries to raise consciousness, not hatred. By identifying the source of pain – here, a ruthless and greedy class of machinators – CC believes this can serve as a first step to reclaim parts of our lives.



THE NEFARIOUS

The Nefarious
A collection of 23 portraits
80 x 60 cm





Cécile Coiffard

Kunstzentrum Tegel-Süd D - 13507 Berlin T: +49 179 11 94 174 atelier@cecile-coiffard.de

<http://www.cecile-coiffard.de>

<https://www.facebook.com/CecileCoiffardArtCorner/>